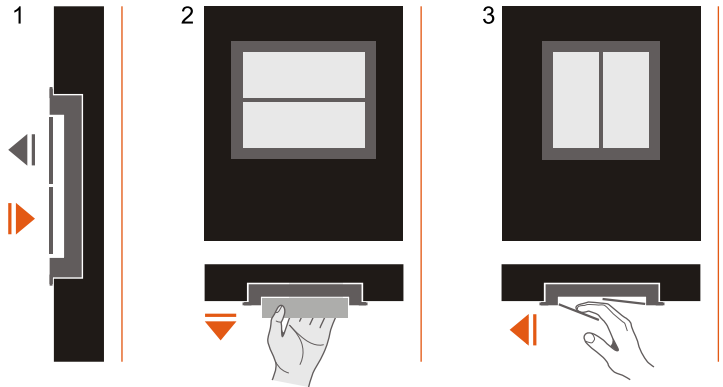


e-motion handle

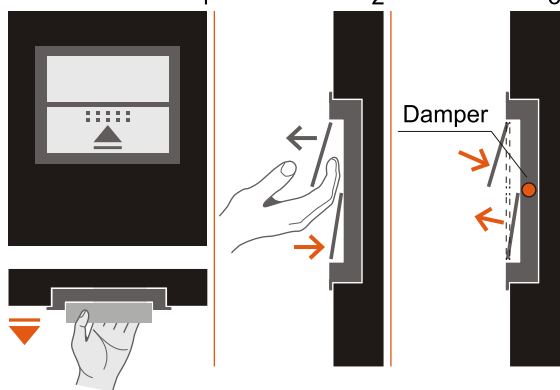


FUNCTION



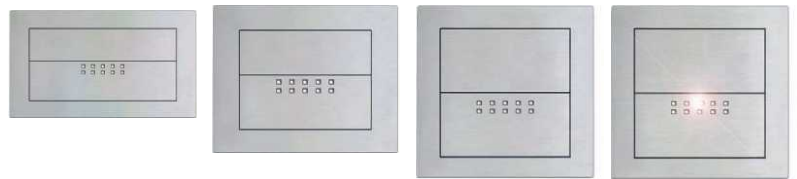
1. The two flap covers include an integrated damper
2. Opening a drawer or cabinet
3. Opening a sliding door

FUNCTION



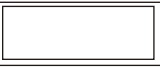


1. Only the lower flap cover can be pushed (Single Flap!)
2. By pushing the lower flap cover, the upper flap opens automatically and a full pull appears
3. The two flap covers close softly through an integrated damper

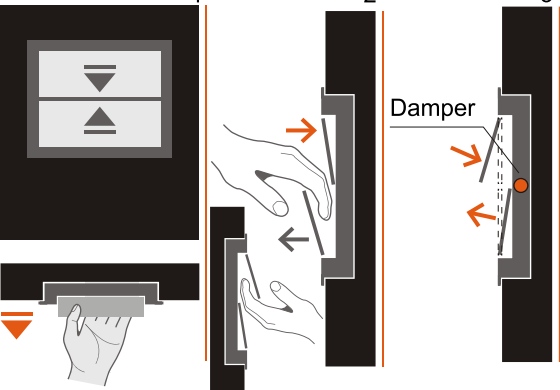
TYPE L standard TYPE M standard TYPE S standard TYPE S LED



Special model on request!
LED flashes every 3 sec., live span
Or battery cell approx, 2 years.

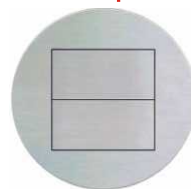
				L	B
ART. NO.	STAINLESS LOOK	ALUMINUM LOOK	WHITE SEMIMAT		
TYP L st.	1101	1103	1107	152	87
TYP L st.	1201	1203	1207	112	87
TYP L st.	1401	1403	1407	74	74
TYP L st.	1501	1503	1507	74	74

FUNCTION



1. The two flap covers can be pushed inside (Double Flap!)
2. Handle allows pulling in both ways, flaps move simultaneously in the opposite direction
3. The two flap covers close softly through an integrated damper

TYPE R special



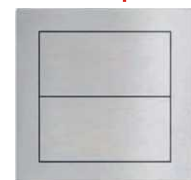
Special models and designs upon request!



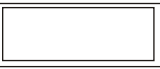
TYPE L special



Type L special and Typ S special available from september 2012

TYPE S special



				L	B
ART. NO.	STAINLESS LOOK	ALUMINUM LOOK	WHITE SEMIMAT		
TYP L st.	1131	1133	1137	152	87
TYP S st.	1411	1413	1417	74	87